

2011  **SMOKERCRAFT**

UTILITY



180 Freedom Tiller
[ALSO AVAILABLE IN SIDE CONSOLE CONFIGURATION]

160 Freedom Tiller
[SHOWN WITH OPTIONAL TROLLING MOTOR.
ALSO AVAILABLE IN SIDE CONSOLE CONFIGURATION]



16' Big Fisherman
[SHOWN WITH OPTIONAL TROLLING MOTOR]



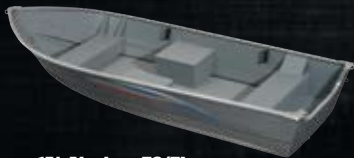
14' Big Fisherman
[SHOWN WITH OPTIONAL TROLLING MOTOR]



168 Pro Mag



140 Pro Mag
[SHOWN WITH OPTIONAL TROLLING MOTOR]



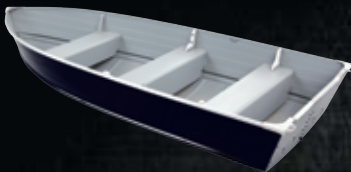
**15' Alaskan TS/TL
Split Seat DLX**



**13' Alaskan TS/TL
Split Seat DLX**



12' Alaskan TS/TL



14' Voyager
[ALSO AVAILABLE IN SPLIT SEAT CONFIGURATION]



14' Canadian



12' Canadian



1648 Jon



1448 Jon



1436 Jon



1232 Jon



1032 Jon



SMOKERCRAFT

2011  **SMOKERCRAFT**
UTILITY

	Length	Beam	Depth	Interior Depth	Transom Width	Transom Height	Dry Weight (Lbs)	Maximum Persons	Maximum Cap.	Maximum H.P.	Fuel Capacity (Gal.)	Color	Bottom Gauge	Side Gauge	Rib Gauge
180 Freedom Tiller	18' 11"	89"	N/A	22"	85"	LS	875	6	900	90	N/A	Red or Camel	0.100	0.060	N/A
180 Freedom Side Console	18' 11"	89"	N/A	22"	85"	LS	875	6	900	125	18	Red or Camel	0.100	0.060	N/A
160 Freedom Tiller	16' 11"	89"	N/A	22"	85"	LS	875	6	900	75	N/A	Red or Camel	0.100	0.060	N/A
160 Freedom Side Console	16' 11"	89"	N/A	22"	85"	LS	875	6	900	90	18	Red or Camel	0.100	0.060	N/A
168 Pro Mag	16' 0"	81"	33"	25"	74"	LS	700	5	1250	60	N/A	Charcoal	0.080	0.064	0.080
140 Pro Mag	14' 5"	67"	30"	19"	59"	LS/SS	475	4	975	35	N/A	Charcoal	0.064	0.060	0.064
16' Big Fisherman	16' 5"	70"	31"	22"	63"	LS	460	5	1100	40	N/A	Black	0.064	0.060	0.064
14' Big Fisherman	14' 2"	68"	30"	22"	60"	LS/SS	395	4	1100	35	N/A	Black	0.064	0.060	0.064
14' Voyagers	14' 2"	68"	30"	30"	60"	LS/SS	230	5	1000	35	N/A	Black	0.064	0.060	0.064
14' Voyager Split Seat	14' 2"	68"	30"	30"	60"	LS/SS	230	5	1000	35	N/A	Black	0.064	0.060	0.064
14' Canadian	13' 10"	59"	20"	20"	50"	SS	130	4	700	15	N/A	White	0.050	0.050	0.050
12' Canadian	11' 9"	56"	20"	20"	50"	SS	112	3	600	10	N/A	White	0.050	0.050	0.050
15' Alaskan TL Split Seat DLX	14' 11"	68"	27"	21"	59"	LS	270	4	850	35	N/A	Gray	0.064	0.060	0.064
15' Alaskan TS Split Seat DLX	14' 11"	68"	27"	21"	59"	SS	270	4	850	35	N/A	Gray	0.064	0.060	0.064
13' Alaskan TL Split Seat DLX	12' 11"	66"	26"	20"	56"	LS	225	4	700	25	N/A	Gray	0.064	0.060	0.064
13' Alaskan TS Split Seat DLX	12' 11"	66"	26"	20"	56"	SS	225	4	700	25	N/A	Gray	0.064	0.060	0.064
12' Alaskan TL	11' 10"	63"	24"	19"	56"	LS	185	3	700	15	N/A	Gray	0.064	0.060	0.064
12 Alaskan TS	11' 10"	63"	24"	19"	56"	SS	185	3	700	15	N/A	Gray	0.064	0.060	0.064
1648 Jon	16' 0"	72"	22"	22"	71"	LS/SS	295	4	900	35	N/A	Olive	0.072	0.072	0.072
1448 Jon	14' 0"	72"	22"	22"	71"	LS/SS	260	3	900	25	N/A	Olive	0.072	0.072	0.072
1436 Jon	14' 0"	57"	18"	18"	56"	SS	185	3	650	20	N/A	Olive	0.064	0.064	0.064
1232 Jon	12' 0"	51"	16"	16"	50"	SS	120	2	390	6	N/A	Olive	0.050	0.050	0.050
1032 Jon	10' 0"	51"	16"	16"	50"	SS	100	2	290	3	N/A	Olive	0.050	0.050	0.050

FOR THE LATEST NEWS, MODEL UPDATES AND OTHER INFORMATION, PLEASE visit www.smokercraft.com

TO TALK TO THE DEALER NEAREST YOU, DIAL 1-866-719-7873.

CONNECTS DIRECTLY TO DEALER. PLEASE CALL DURING BUSINESS HOURS.

Authorized Smokercraft Dealer:

Smokercraft | P.O. Box 65 | 68143 Clunette Street | New Paris, IN 46553

In the interest of continually developing the finest products possible, Starcraft reserves the right to change products and specifications without notice. All representations in this catalog are believed to be correct at the time of publication. Some optional equipment may be shown in some photographs. Some models may not be available outside the United States. © 2010 Smokercraft Printed in U.S.A. August 2010

